

# Helipad Options

David Klein, MD, CEO

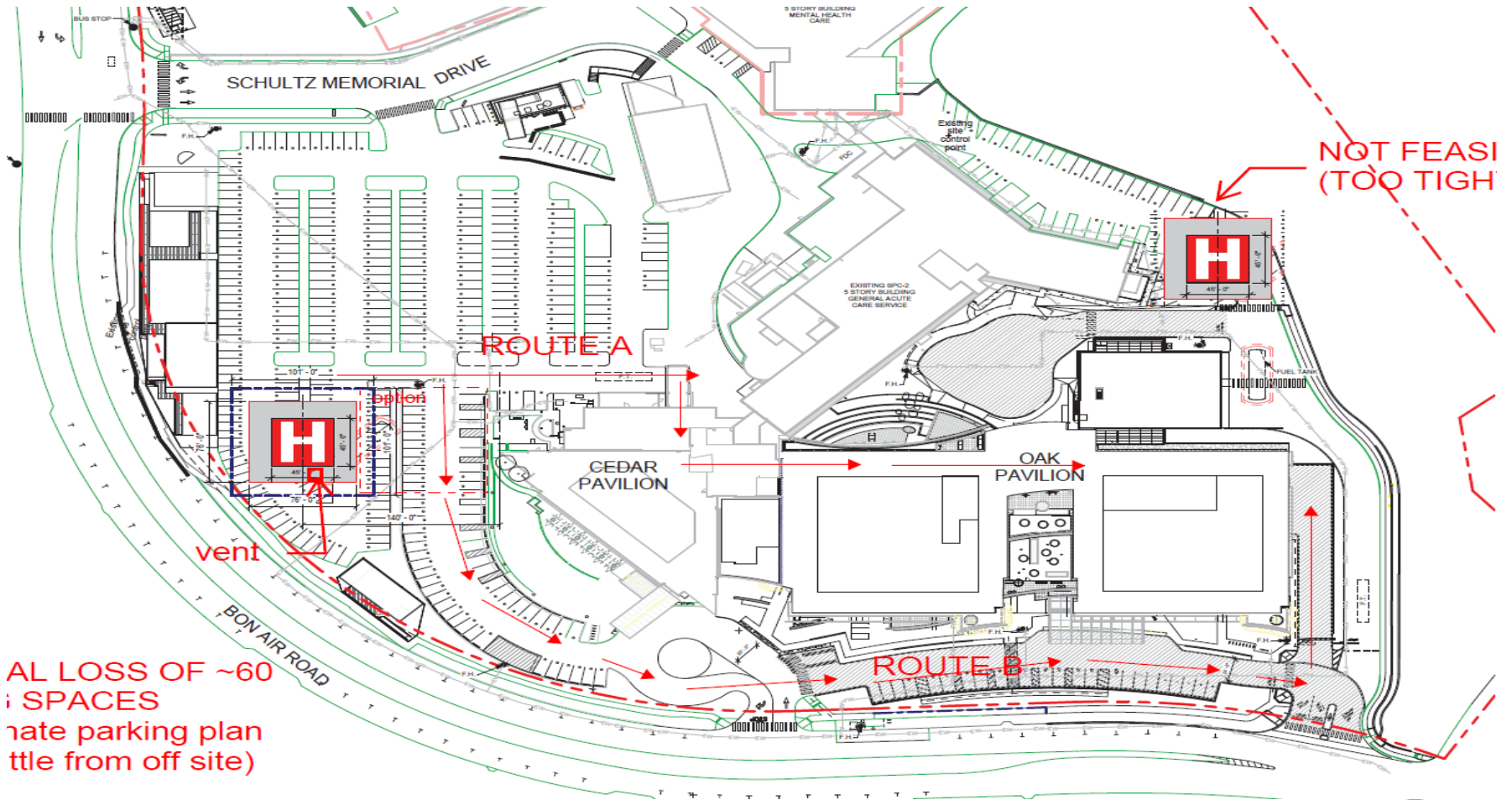
# Marinhealth Medical Center Heliport Study

- Engaged the firm Heliplanners through Perkins Eastman to complete initial study February, 2021
- Design for H145 Helicopter Landings
  - Static Load of 9,000 pounds
  - Live Load of 13,500 pounds
  - Blackhawks 22,000/33,000 pounds
- Environmental Impact Review Required for County of Marin approval
- \$7,200,000 Parking Lot
- \$10,920,000 Oak Pavilion
- \$8,640,000 Ambulatory Services Building
  - Note Includes 20% escalation factor from time of 3<sup>rd</sup> party estimate



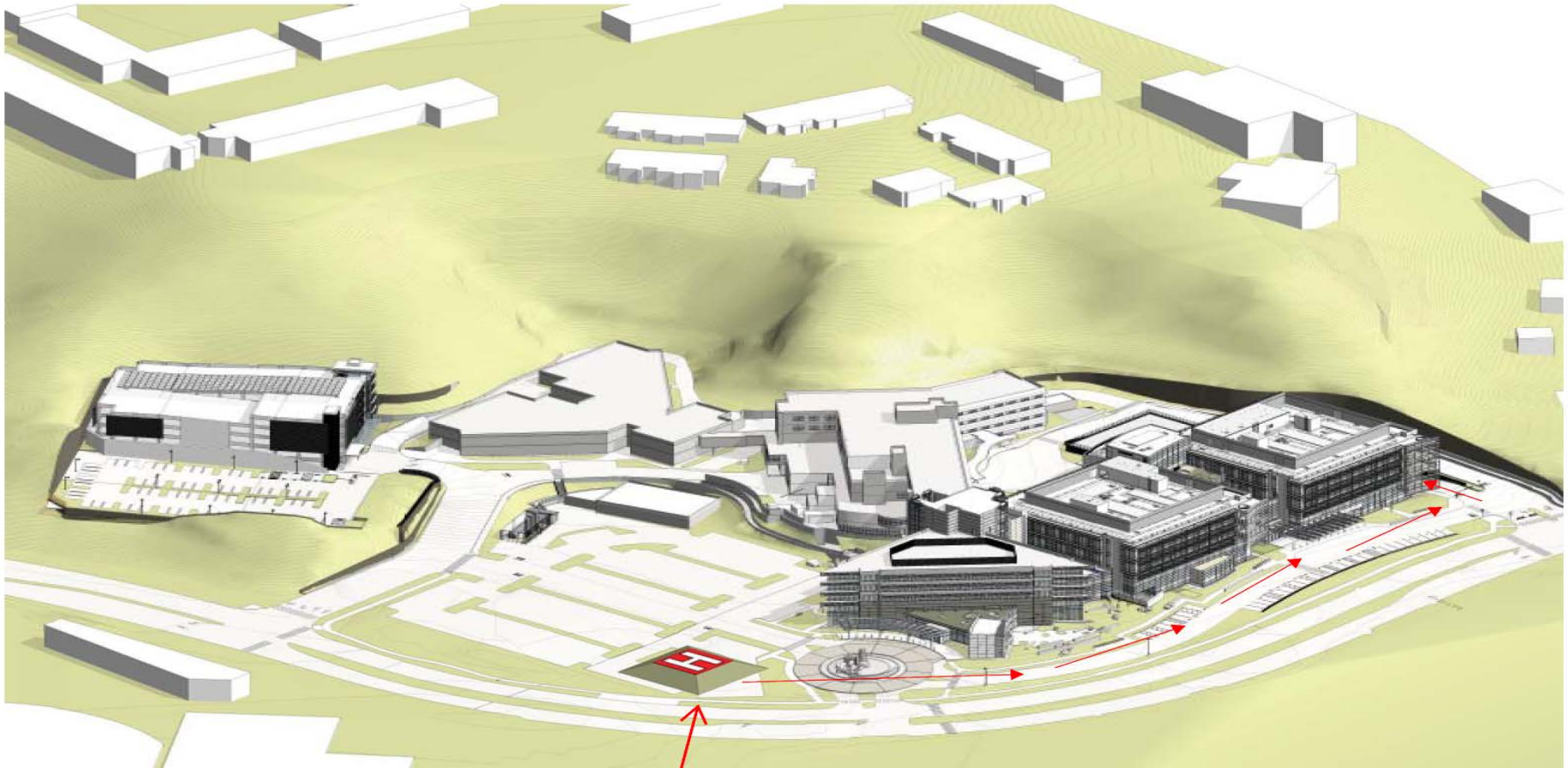
# Site Plan A – Parking Lot

- **\$7,200,000**



# Site Plan A – Parking Lot

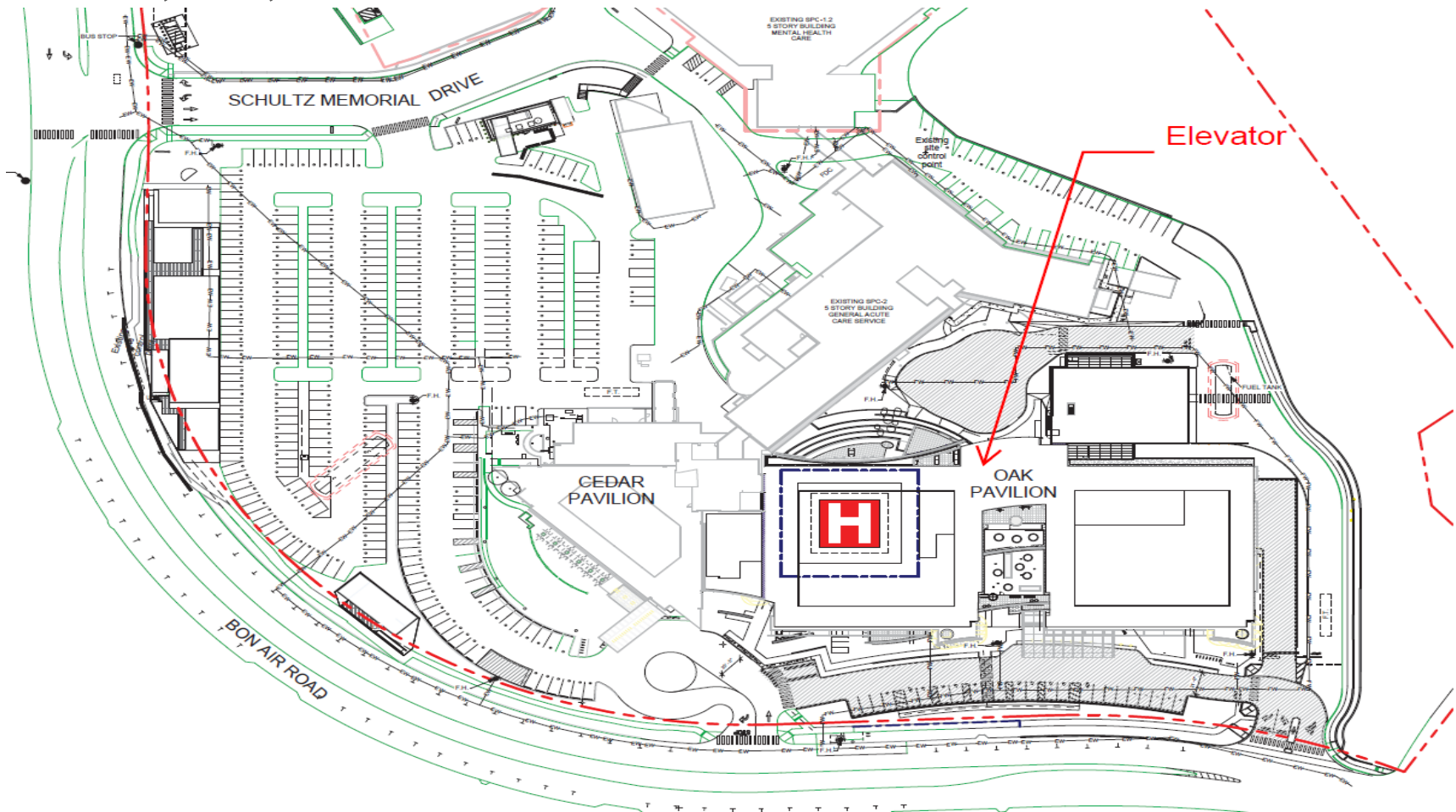
- \$7,200,000





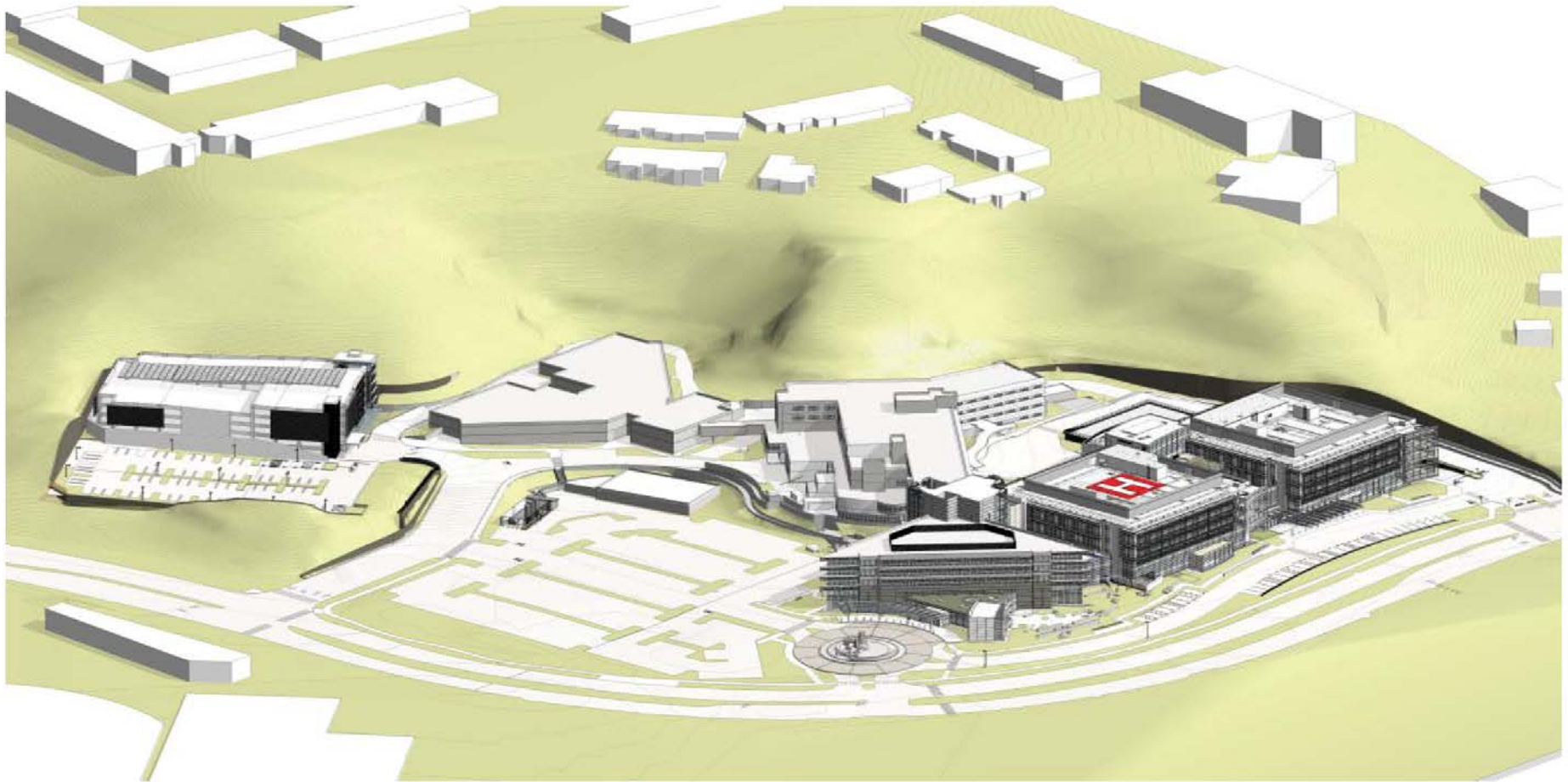
# Site Plan B – Oak Pavilion

■ \$10,920,000



# Site Plan B – Oak Pavilion

- **\$10,920,000**



# Site Plan C – Ambulatory Services Building

